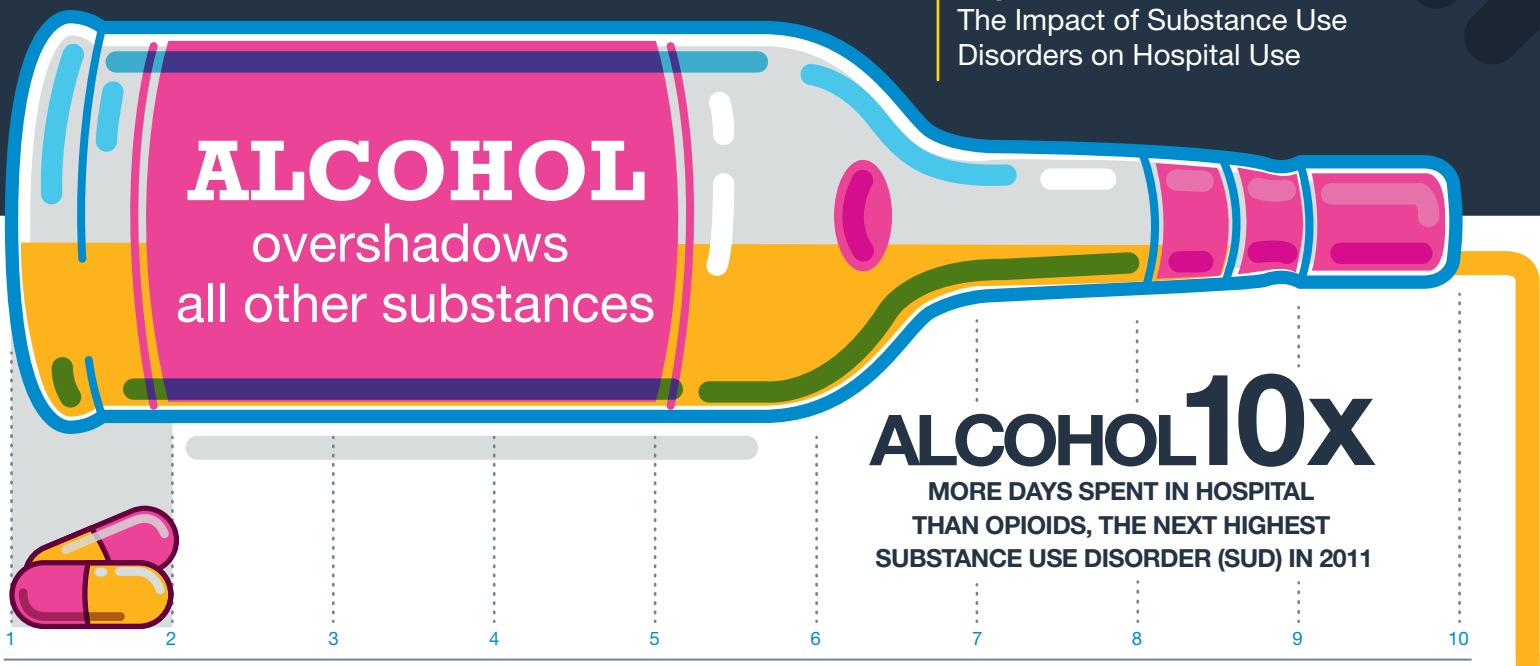


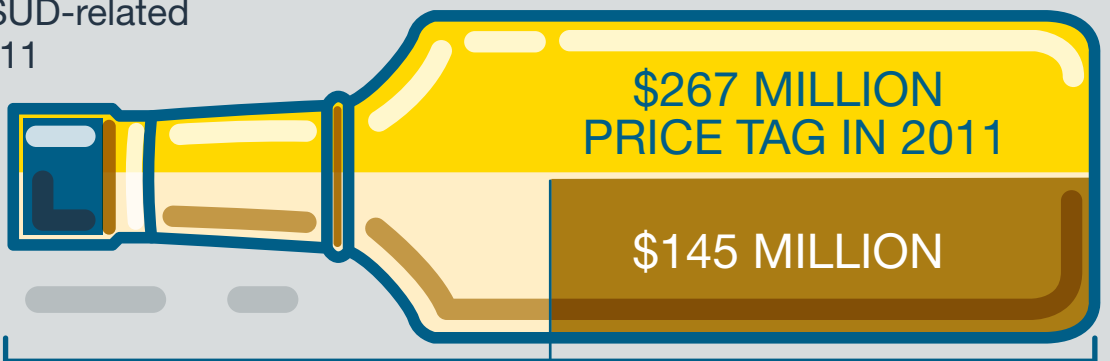
SUBSTANCE USE DISORDERS A SERIOUS HEALTH ISSUE

Report:
The Impact of Substance Use Disorders on Hospital Use

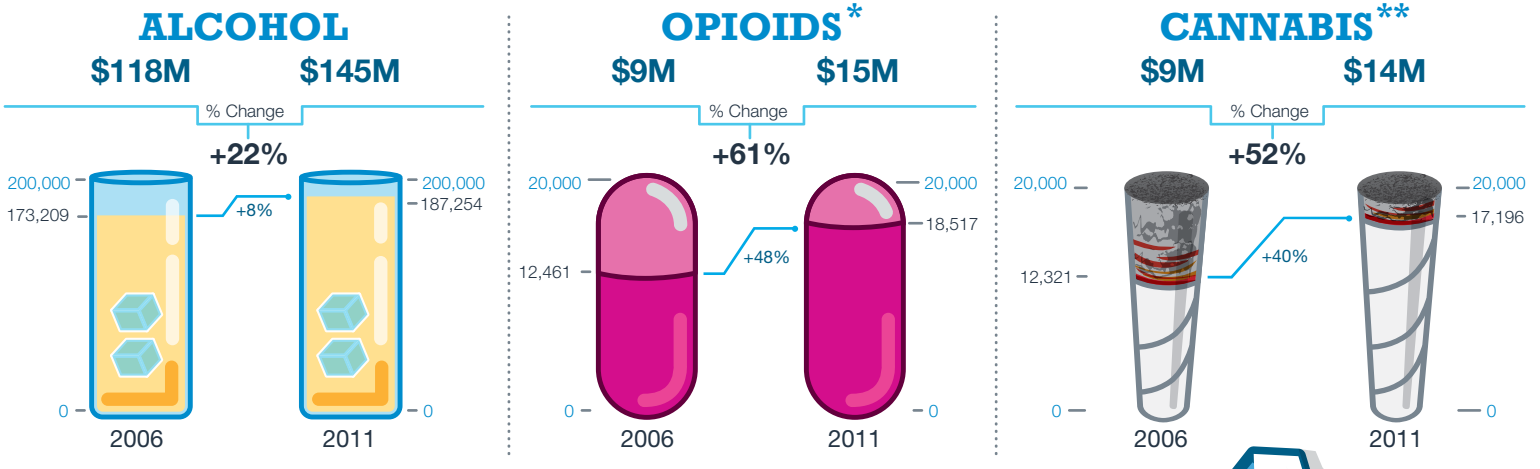


Alcohol was responsible for over half (\$145 million) of the \$267 million price tag associated with SUD-related hospitalizations in 2011

54%
hospital costs related to alcohol

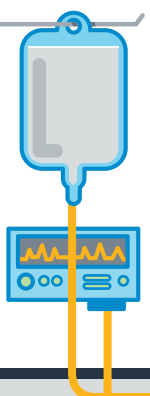


DAYS SPENT IN HOSPITAL + HOSPITAL COSTS ARE INCREASING FOR:

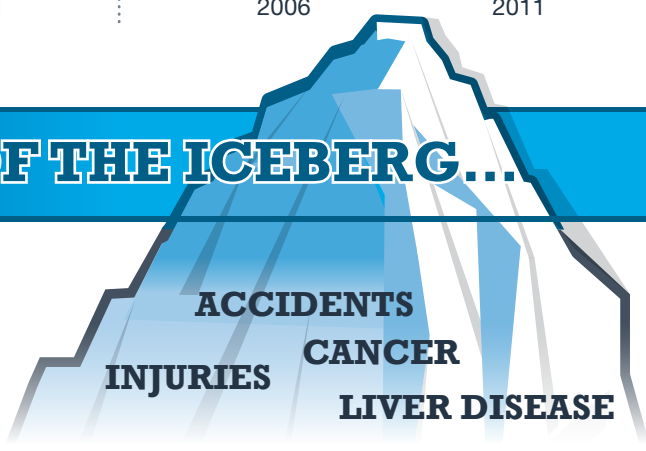
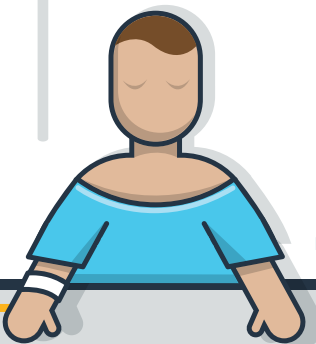


* Hospitalizations for prescription and illicit opioids would be included in this category.
** Any hospitalizations for synthetic cannabinoid use would also be included in this category.

AND THIS IS ONLY THE TIP OF THE ICEBERG...



The impact of SUDs on total hospital use IS ACTUALLY MUCH **HIGHER**



The data presented include only those admitted to a hospital bed because for the primary reason of having an SUD, not those admitted for other harms related to substance use and not those admitted to other services offered in the community.

What can be done?

Investments in prevention, early intervention and treatment can reduce the need for hospital visits.

+

Canadians should follow **Canada's Low-Risk Alcohol Drinking Guidelines:**



Canadian Centre on Substance Abuse
Partnership. Knowledge. Change.

For these guidelines, "a drink" means:



Beer/Cider/Cooler 341 ml (12 oz.) 5% alcohol content	Wine 142 ml (5 oz.) 12% alcohol content	Distilled Alcohol (rye, gin, rum, etc.) 43 ml (1.5 oz.) 40% alcohol content
---	--	---